

**GET YOUR PROFITS
MOVING WITH
A FLOW-EASY
TRUCK VIBRATOR.**



FLOW-EASY
INDUSTRIAL VIBRATORS BY ENMIN

A Flow-Easy vibrator speeds up the unloading of bulk materials, providing an efficient, safe and controlled load discharge. Less time unloading, more time making money.



A Flow-Easy vibrator allows for a lower, safer tipping angle.



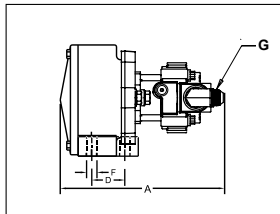
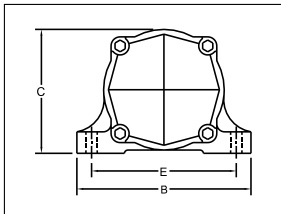
A FLOW-EASY VIBRATOR:

- Eliminates carry back
- It's the simple cost effective alternative to body liners
- Lowers fuel and maintenance costs
- Reduces wear and tear on the truck and trailer
- Allows for lower discharge elevation height, minimising the risk of roll over
- Improves driver and truck safety
- Hydraulic and pneumatic options available

Guide to vibrator selection.

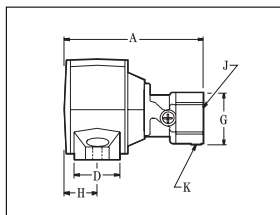
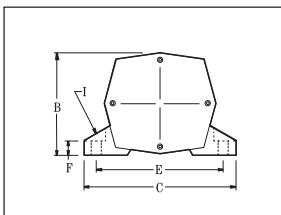
SUITABLE VIBRATOR	Tip Trucks	B Double 3 axles 4 axles	Semi Tipper	Belly Dumpers	Side Tipper	Vacuum Trucks	Street Sweepers	Concrete Pump Trucks	Concrete Agitators	Spreaders
DC ELECTRIC										
DC-3200	✓	✓	✓	✓	✓	✓	—	—	—	—
DC-2500	✓	✓	—	—	—	—	—	—	—	—
DC1-400	✓	—	—	—	—	—	✓	✓	—	✓
HYDRAULIC										
THD-2500	✓	✓	✓	✓	✓	✓	—	—	—	—
H9-500	✓	—	—	—	—	—	✓	✓	—	✓
PNEUMATIC										
VMSAC1300	✓	✓	✓	✓	✓	✓	—	—	—	—
ATU-62	✓	✓	—	—	—	✓	—	✓	✓	✓
ATU-31	—	—	—	—	—	—	—	—	—	✓

Specifications: Hydraulic Vibrators.



Model THD-2500

In. Lbs	VPM	Force lbs	GPM	VPM	Force Lbs	GPM	VPM	Force Lbs	GPM	Max PSI
6.00	2000	681	2.0	3000	1534	2.8	4000	2726	3.5	2000
0.68Nm	-	3.03kN	7.61l/m	-	6.82kN	10.6l/m	-	12.13kN	13.3	-
Dimensions			Bolt	Pattern	Bolt size	Port				
A	B	C	D	E	F	G	Weight			
8.00"	9 3/4"	6 7/8"	2"	8"	5/8"	3/4"-16 SAE	38Lbs			
203mm	248mm	175mm	51mm	203mm	16mm	-	17.5Kg			



Model H9-500

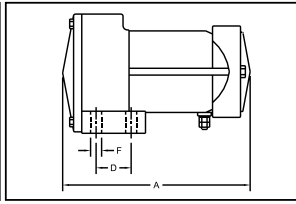
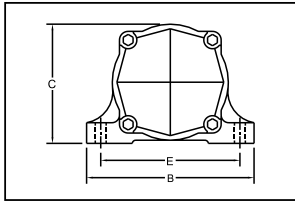
Max RPM*	7Lb Force (IN.Lb)	Max PSI	Max GPM**	dB***								
9000	500 (.22)	1500	3.15	84								
-	0.02Nm	-	11.92l/m	-								
Bolt Pattern									Bolt Size/Qty	Ports npt	Case Drain SAE	Weight
A	B	C	D	E	F	G	H	I	J	K	Weight	
6 1/4"	4 5/8"	6 3/4"	1 1/2"	5 1/2"	1"	2 3/4"	1 5/8"	3/8" x 1 1/4" / 2	3/8"	7/16" - 20	11Lbs	
159mm	118mm	172mm	38mm	140mm	25mm	70mm	41mm	-	-	-	5Kg	

* RPM varies with oil flow.

** Oil flow controls speed (RPM). The oil flow needed to maintain speed may vary with temperature and motor wear.

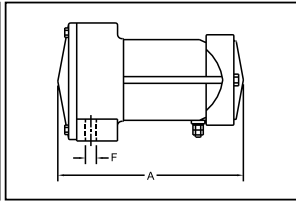
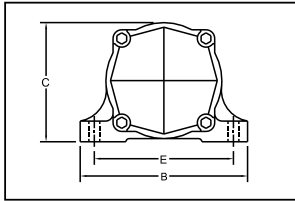
*** Decibel reading taken with the vibrator mounted on a 400Lb plate at a distance of 3ft from dB meter - A scale: slow response.

Specifications: 12/24V DC models.



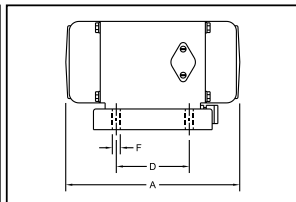
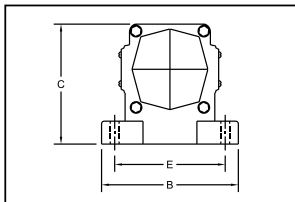
Model DC-3200

					Dimensions			Bolt	Pattern	Bolt size	
In. Lbs	VPM	Force Lbs	Amps 12V	Amps 24V	A	B	C	D	E	F	Weight
7.00	4000	3200	85	62	10 ³ / ₈ "	9 ³ / ₄ "	6 ⁷ / ₈ "	2"	8"	5 ¹ / ₈ " x 1 ³ / ₄ "	36Lbs
0.8Nm	-	14.2kN	-	-	264mm	248mm	175mm	51mm	203mm	-	16.5Kg



Model DC-2500

					Dimensions			Bolt	Pattern	Bolt size	
In. Lbs	VPM	Force Lbs	Amps 12V	Amps 24V	A	B	C	D	E	F	Weight
3.5	5000	2500	72	55	10"	9 ³ / ₄ "	6 ⁷ / ₈ "	-	8"	5 ¹ / ₈ " x 1 ³ / ₄ "	31Lbs
0.4Nm	-	11.12kN	-	-	254mm	248mm	175mm	-	203mm	-	14.1Kg



Model DC1-400

					Dimensions			Bolt	Pattern	Bolt size	
In. Lbs	VPM	Force Lbs	Amps 12V	Amps 24V	A	B	C	D	E	F	Weight
1.00	3800	410	15	7	9 ¹ / ₁₆ "	6 ³ / ₈ "	5 ⁹ / ₁₆ "	3 ³ / ₄ "	5"	3 ³ / ₈ " x 1 ¹ / ₂ "	18Lbs
0.11Nm	-	1.82kN	-	-	230mm	162mm	142mm	95mm	127mm	-	8.2Kgs

If an air operated model is required, please contact Flow-Easy to discuss pneumatic options.

Truck Vibrators - questions and answers.

These are some of the most frequently asked questions we receive. If you have any questions we haven't answered, please call us.

Is installing a truck vibrator a major piece of engineering?

No – it is very easy to install an Enmin Truck Vibrator. Any competent auto electrician and fitter can have it installed and operational in hours.

Can I have a truck vibrator installed on a new truck I'm buying?

Any new or used vehicle can have a truck vibrator installed.

How do I know what sort of vibrator I need for my truck?

By contacting one of our experienced technical sales staff, the correct size vibrator can be recommended.

Can Enmin help with the installation or recommend local installers?

Enmin does not provide an installation service – however, we can provide recommendations on expert outlets that are capable of completing the installation process on your behalf.

If I trade in my truck, can I transfer the vibrator to the new one?

Yes – all Enmin Truck Vibrators are transferable and can be reinstalled on new equipment.

Does a truck vibrator require any regular maintenance or servicing?

No major servicing or maintenance is required.

Do drivers need to be trained on how to use a truck vibrator properly?

Enmin would always recommend that operator training is provided to drivers, to ensure that the best possible outcome is achieved.

What's the warranty and guarantee on a unit you provide?

Enmin guarantees that the products we offer will be void of any manufacturing defects for a period of twelve months from date of purchase and will be replaced or repaired by Enmin if deemed to be found defective.

About the Flow-Easy vibrator range.

Enmin's Flow-Easy range of vibrators provides a solution for any bulk material flow problem. The range is specifically designed to suit Australia's environment and covers a multitude of industrial segments including transport, agriculture, mining, concreting and quarrying.

For over 40 years Enmin have been a leading Australian manufacturer of materials handling systems and vibratory equipment.

Unlike many other suppliers we don't adopt a simple 'one size or style fits all' approach. We carefully analyse the specific issue and the intended application and then recommend the appropriate solution.



BULK TRANSPORT



VACUUM TANKERS



INDUSTRIAL



T: +61 3 9800 6777 | W: floweasy.com.au

FLOW-EASY
INDUSTRIAL VIBRATORS BY ENMIN